



Vidya Bhawan Balika Vidyapith

Shakti Utthan Ashram, Lakhisarai – 811311 (Bihar)

Chapter:- 4. PROGRAMMING AND BASICS .

CLASS- IXTH

SUB TEACHER :- VIKASH KR. RAJAK

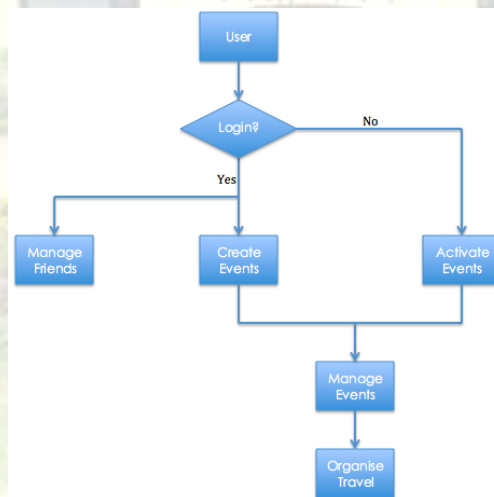
SUBJECT:- IT

DATE :- 26/05/2020

📖 Topic :- System Flow Chart, Error and their types.

➤ **SYSTEM FLOW CHART:-**

System Flow Chart is used to describe complete data processing cycle including the hardware devices and media used. A System Flow Chart shows flow of data in a system where and in what form it is received by the system, how it is input to the computer and what storage media are used to hold it. The symbol used in system flow chart indicates the peripherals to be used in data processing procedure, where output will be produced. System flow chart do not explain the logic of the programs.



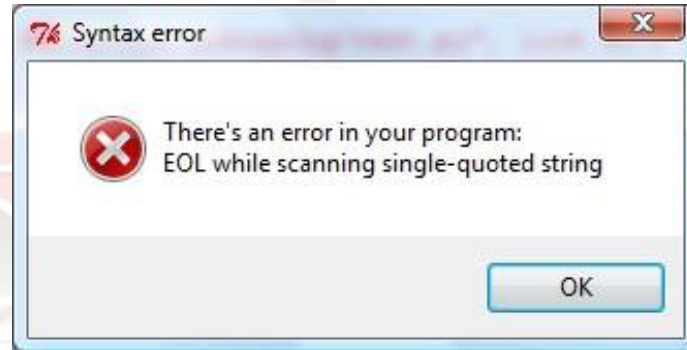
➤ **ERRORS:-**

Errors are the mistakes made by the programmer during program writing. A program rarely runs perfectly for the first time and each program needs to be tested to ensure that it is correct and contains no errors. There are two types of errors generally encountered.

- a) Syntax Error
- b) Run Time Error

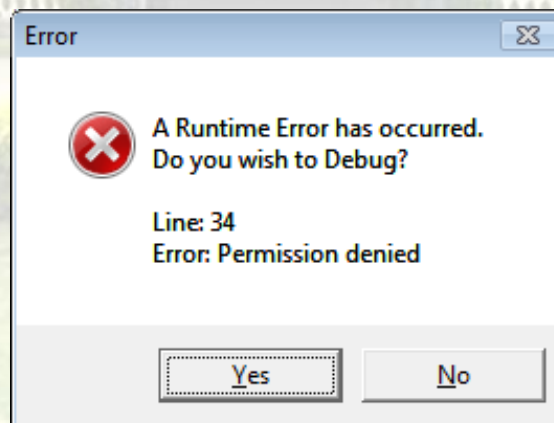
a. **SYNTAX ERROR:-**

The syntax of a programming language is the set of rules to be followed when writing a program in that language. These rules are similar to the grammar rules of Urdu or English language. When a program violates these rules, computer generates a syntax error. Syntax must be correct before program execution.



b. **RUN TIME ERROR:-**

These types of errors stop the execution of the program. It may be due to entering the invalid data at the time of executing a program. For example, if a program is expecting the user to enter the numeric data and the user enters a string data, computer will display an error message.



Home Work (Based on study material of 21-05-20)

Answer the following questions:-

1. What is Loop?
2. Write the types of Loop?
3. What is Flow chart?
4. Write the symbols of flow chart?